

BPL Starlight Waterproof Camera User Manual



BLSBFM00/1.3SPL

DESCRIPTION

The starlight waterproof camera adopt 1/1.9" 720P progressive scan Exmor CMOS sensor, and the wide dynamic range is up to 76dB, mini-illumination up to 0.01Lux. Ensure take you the clear color image in low illumination environments. The application of 3D-DNR technology ensures higher S/N, which efficiently reduces the digital storage and transmission data saving system cost. Fashionable and professional exterior design, makes round the-clock surveillance easy and convenient.

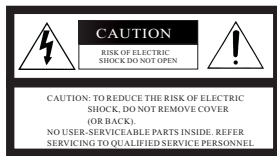


Common camera

Starlight camera

ATTENTION

Thank you for your purchasing this product. Before attempting to connect or operate this product, please read these instructions carefully and save this manual for future use.



1. Use the Appropriate Power Supply
The input power for the camera is DC12V. Be sure to connect it to the appropriate power. Wrong connection may cause malfunction and/or damage to the video camera.
2. Do not attempt to disassemble the camera.
To prevent electric shock, do not remove screws or covers. There are no user serviceable parts inside. Ask a qualified service person for servicing.
3. Handle the camera with care.
Do not abuse the camera. Avoid striking, shaking, etc. The camera could be damaged by improper handling or storage.
4. Do not use strong or abrasive detergents when cleaning the camera body.
Use a dry cloth to clean the camera when dirty. In case the dirt is hard to remove. Use a mild detergent and wipe gently.
5. Clean the sensor faceplate with care.
When cleaning the sensor panel, do not use strong or abrasive detergents. Use a piece of lens tissue or cotton tipped applicator and ethanol.
6. Do not attempt to aim the camera at the sun
Do not attempt to aim the camera at the sun or other extremely bright objects that causes near to appear irrespective of whether the camera is operating or not. This can damage the sensor.
7. Do not put the camera in a place with interference.
When this camera is installed near the equipment like wireless communication device which emits strong electromagnetic field, some irregularity such as noise on monitor screen may happen.

FEATURES

★720P Starlight CMOS Image Sensor

Adopts 1/1.9" 720P Starlight CMOS image sensor and mini-illumination up to 0.01Lux.

★3D Digital Noise Reduction Technology

Adopts 3D noise reduction technology to minimize noise, extending DVR storage by 20%+.

★IR-CUT

Built-in filter switch-over device, ensures the cameras work properly both in day and night.

★Auto D/N shift mode

Adopt color mode in day, because the light is enough in day; at night the illumination is lower which need higher sensitivity and better image quality, so it change to B/W mode automatically.

★HD Lens

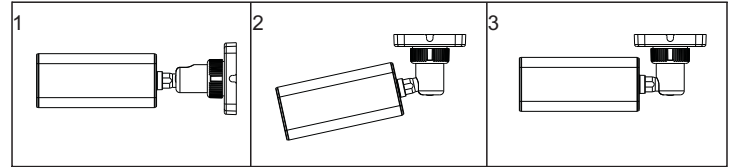
The HD lens using double-sided coating technique to increasing the light transmission amount, makes the image clearer

★Image transmission up to 500 meters.

★Adopts special algorithm, reducing video and color noise and thus improve image resolution, to produce clearer and sharper image.

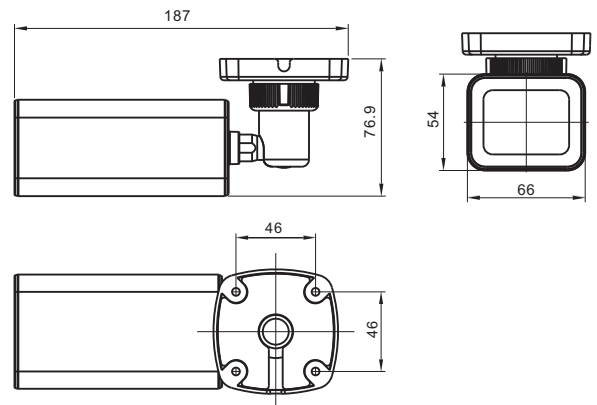
★IP-66 waterproof standard

PARTS INSTRUCTION AND INSTALLATION



1. Fix the camera to the place you need with screws.
2. Loose the horizontal adjusting ring, and adjust the camera to the place you need, then fix the horizontal adjusting ring back.
3. Loose the angle fixed screws, and adjust the camera to the place you need, then fix the angle fixed screws back.

DIMENSION(MM)



SPECIFICATION

Model	BLSBFM00/1.3SPL
Sensor	720P progressive scan Exmor CMOS sensor
Effective Pixels	1280(H)x720(V)
Video Frame Rate	25/30fps@720P
Max. transmission distance	500M
Video format	PAL/NTSC
Mini-illumination	0.01Lux
S/N Ration	More than 50dB
Dynamic range	More than 76dB (with AGC OFF)
AGC	Auto
White Balance	AUTO
Backlight	AUTO
NR	3D-DNR
Brightness	Auto
OSD	Not support
Sync code	Internal
Voltage	DC12V
Current	100mA±15%
Day/Night	Support ICR
Lens	6mm HD CS Lens
Waterproof standard	Ip66
Video output	AHD
Storage temperature	-20℃~70℃
Operate Temperature	-10℃~50℃RH90% MAX
Size	187(L) * 66(W) * 76.9(H)
Weight	600g

*Specifications subject to change without notice.

EN-A06-230-150806